



DS-PD201MC-WE&WB&WA Wireless Magnetic Contact

User Manual

Contents

Chapter 1 Unboxing Video	1
Chapter 2 Components Introduction	2
Chapter 3 Enrollment via App	3
Chapter 4 Installation	4
4.1 Installation Preparation	4
4.2 Device Installation	5
4.2.1 Mounting with Screws	5
4.2.2 Mount with Sponge Tape	6
Chapter 5 Test	8
Chapter 6 Configure via App	9
Chapter 7 Specifications	11
Appendix A. Legal Information	12
Appendix B. Symbol Conventions	14

Chapter 1 Unboxing Video

Watch the video to get the device general information.

Refer to the video for details:

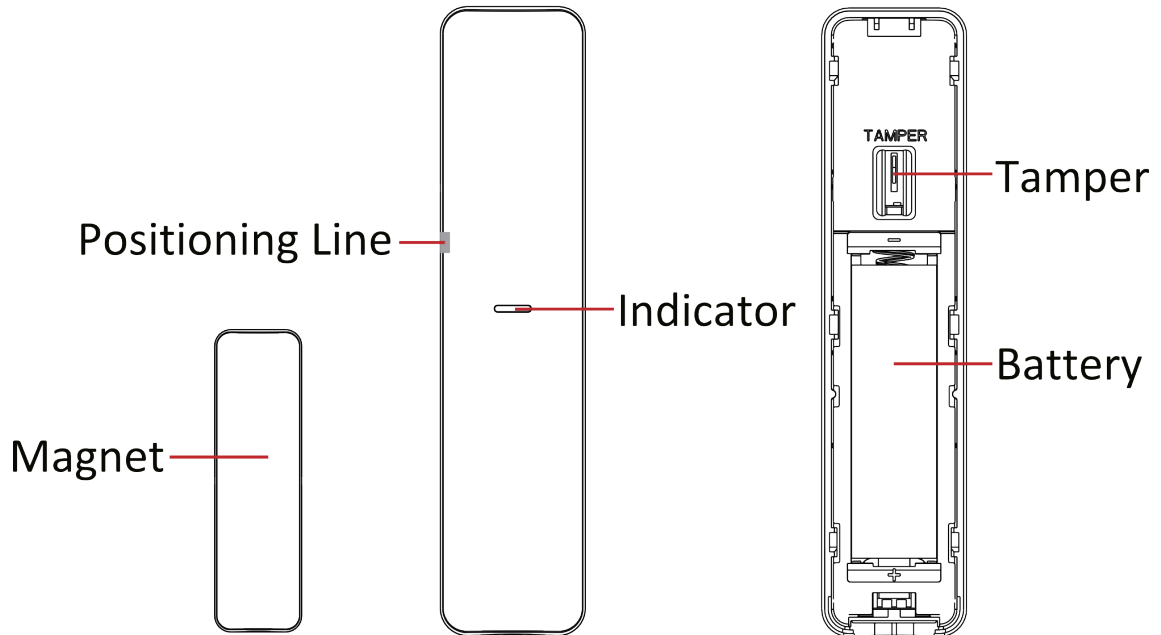
Refer to the link to see the high-definition video: <https://enpinfodata.hikvision.com/analysisQR/showQR/b722d26f>

Chapter 2 Components Introduction

Check components location and name for further use.

 **Note**

- Structures may differ in different models, please refer to the actual product.



Indicator Status	Device Status
Blue LED remains on	Alarm
Green LED flashes continuously	Find me
Orange LED flashes	Enrolling
Green LED flashes 7 times	Enrolled

Chapter 3 Enrollment via App

Steps

1. Download Hik-Connect and log in.
2. Enroll the control panel to the App.

 **Note**

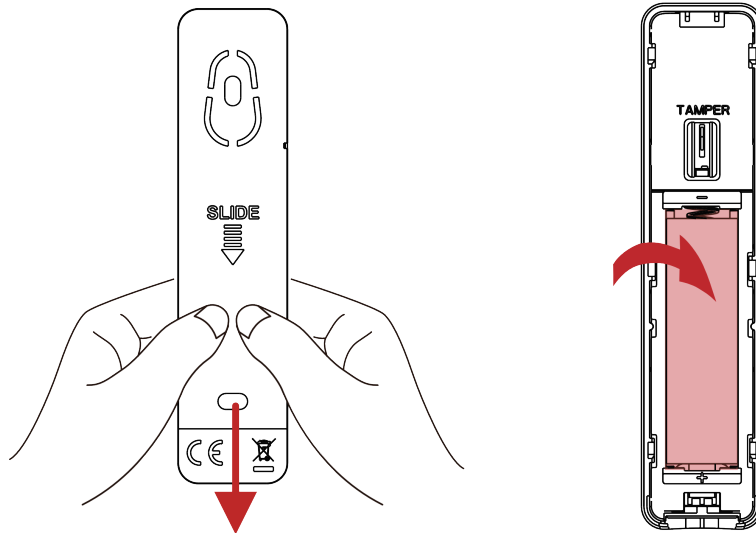
For more details, refer to the user manual of Hik-Connect App and control panel.

3. On the device list page, tap **Add Device**.
4. Select adding method.
 - Select **Manual Adding**, scan the QR code or enter the serial No.

 **Note**

The QR code is usually on the back cover of the device.

- Select **Batch Adding**, the device will be enrolled to the control panel automatically.
5. Slide down to remove the rear cover. Install the battery into the device. Orange LED starts to flash.




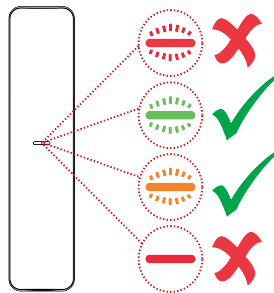
6. The green LED flashes for 7 times, the detector is enrolled.

Chapter 4 Installation

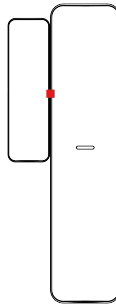
4.1 Installation Preparation

Steps

1. Tap the device on the device list page. And tap  → **Signal Strength Test** to check signal strength.



2. Align the positioning line.



3. Check the environment.

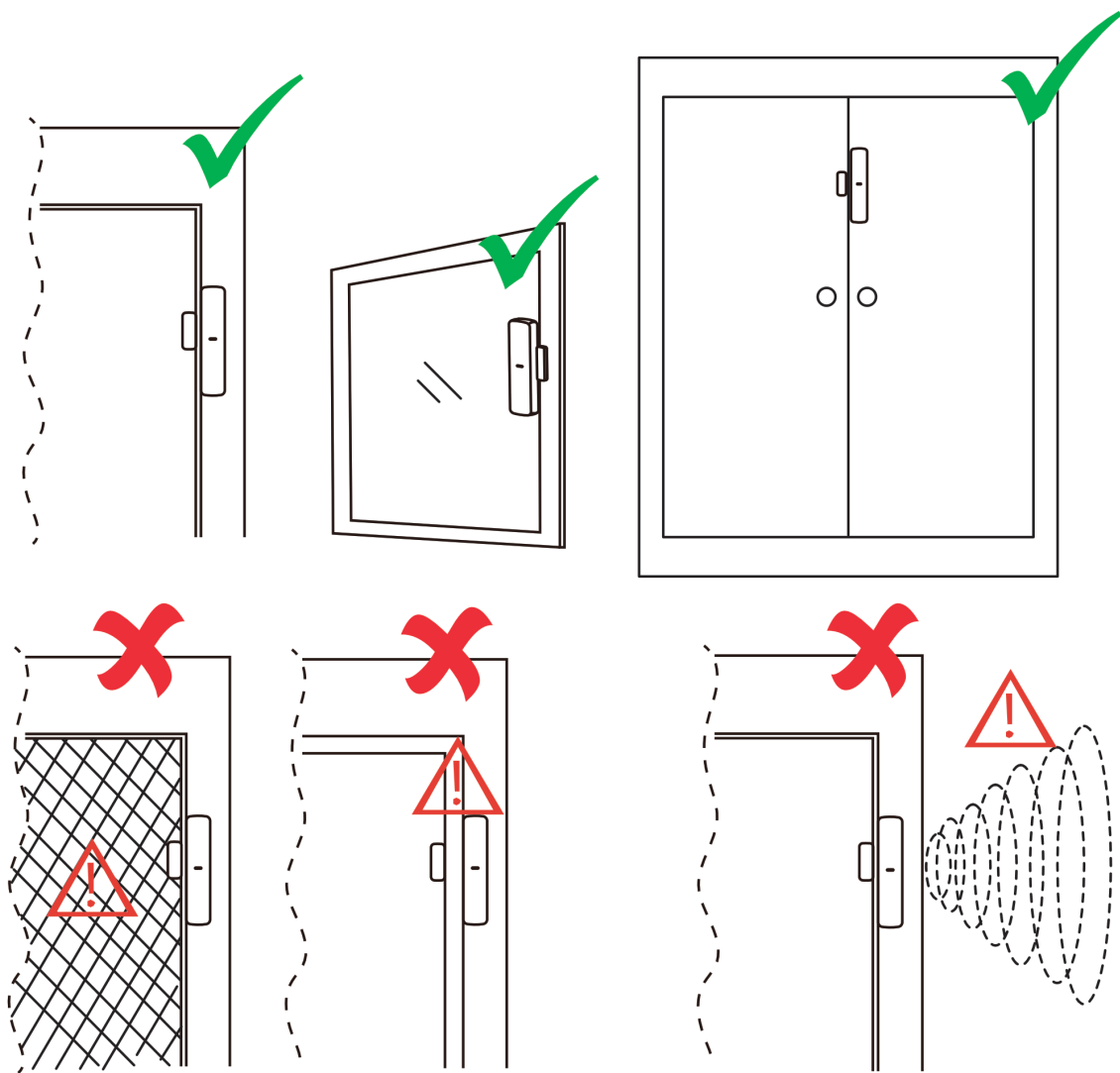


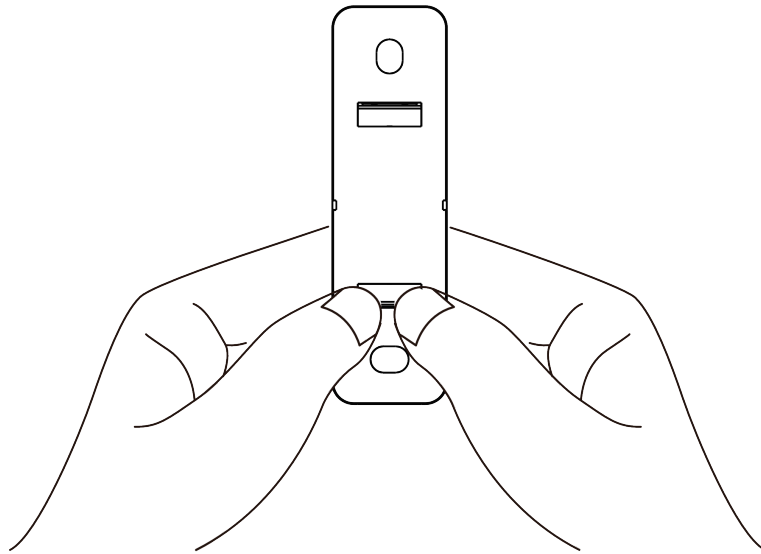
Figure 4-1 Environment Check

4.2 Device Installation

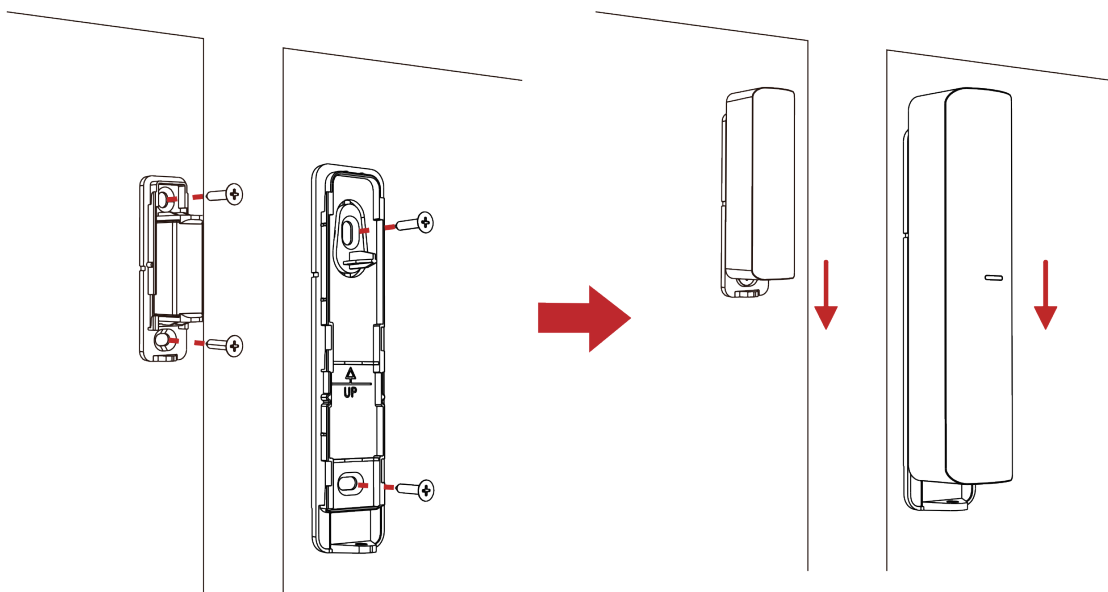
4.2.1 Mounting with Screws

Steps

1. Slide down to remove the rear cover of the magnet.



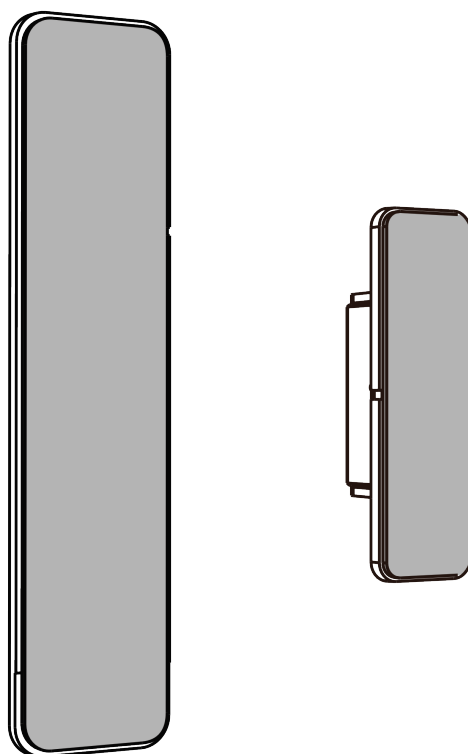
2. Install the front cover.



4.2.2 Mount with Sponge Tape

Steps

1. Remove the sticker of the sponge tape, and fix the detector and magnet to the wall.

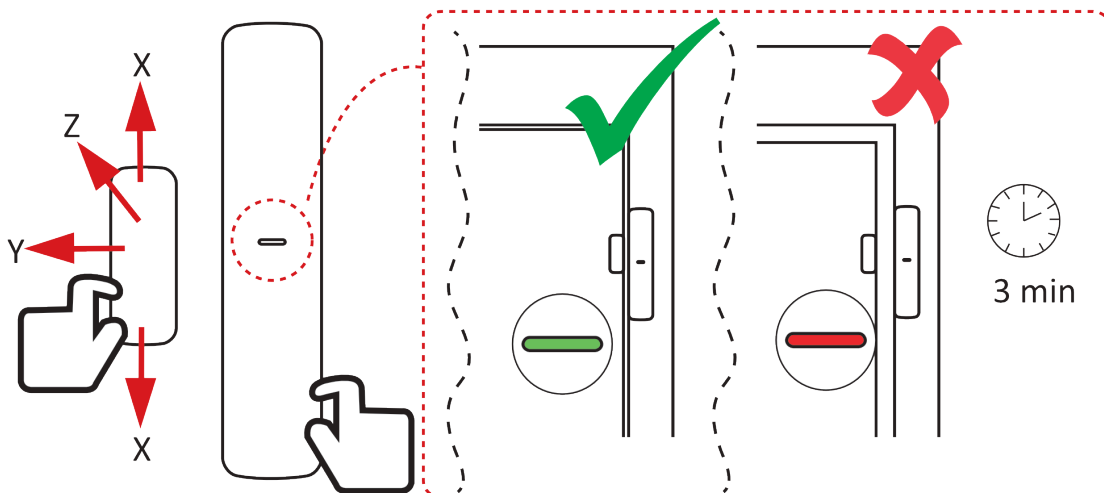


Chapter 5 Test


The detector starts test automatically after enrollment. Make a gap between the detector and magnet. While the LED turns green, the alarm is triggered by this gap. Adjust the installation position of the detector to get a satisfied alarm gap.

The alarm will be triggered while the gap is bigger than that shows in the table. The LED keeps blue for 1 s.

Axes of Operation	Event	On Non-Ferromagnetic Material Surface	On Ferromagnetic material surface
X+	Break	13	13
	Make	18	19
X-	Break	14	12
	Make	18	18
Y	Break	33	27
	Make	28	24
Z+	Break	48	35
	Make	45	30
Z-	Break	34	20
	Make	31	16



Chapter 6 Configure via App

Tap the device on the device list page, and tap  to configure device parameters.

Name

Edit device name.

Area

Select linked area or add new area.

Zone Type

Select a zone type.

Instant

This Zone type will immediately trigger an alarm event when armed.

Delay

Entry Delay Time

Entry Delay provides you time to enter the zone to disarm the system without alarm. After triggering, if the zone is not disarmed or silenced before the entry delay time ends, the zone will alarm.

Exit Delay Time

Exit Delay provides you time to leave through the zone without alarm. You should confirm faults first, and then the zone is in arming process. If the delay zone is triggered within the exit delay time but it restores before the time ends, the alarm will not be triggered and the zone will be armed.

Stay Arm Delay Time

Stay arming uses Stay Arm Delay Time to count down. The system gives entry/exit delay time when it is armed or reentered. It is usually used in entrance/exit route (e.g. front door/main entrance), which is a key route to arm/disarm via operating keypad for users.

Follow

The zone acts as delay zone when it detects triggering event during system Entry Delay, while it acts as instant zone otherwise.

24-hour

The zone activates all the time with sound/light output when alarm occurs, whether it is armed or not. It is usually used in fire hazardous areas equipped with smoke detectors and temperature sensors.

Alert with a Sounder

After enabled, it will link the sounder to alarm.

Deactivation

The selected part will be deactivated.

Find Me

Enter the find me mode to search for the device location.

Chapter 7 Specifications

Model WE: 868 Mhz WB: 433 Mhz WA: 915 Mhz	DS-PD201MC-WE	DS-PD201MC-WB	DS-PD201MC-WA
Installation	Indoors		
Indication method	LED		
Detection method	Opening Contact		
Detection gap	25 mm Max.		
Power supply	1 × AA batteries		
Power consumption	Max current: 140 mA Quiescent current: 56 uA		
Battery life	Up to 2 years (standby time)		
Temperature indicator	Yes		
Transmission technology	Tri-X 868.0 - 868.6 MHz	Tri-X 433.1-433.7 MHz	Tri-X 912.5-917.4 MHz
Transmission range (free space)	Up to 1,600 m	Up to 1,200 m	Up to 1,600 m
Maximum effective radiated power (ERP)	Up to 25 mW	Up to 10 mW	Up to 60 mW
Tamper	Yes		
Operating temperature	-10°C to 55°C (14°F to 131°F)		
Operation humidity	10% to 90%		
Protection class of body	No		
Dimension (W × H × D)	Detector: 24 × 104 × 23.5 mm Magnet: 14.4 × 50 × 17.5 mm		
Weight	29 g		

Appendix A. Legal Information

About this Document

- This Document includes instructions for using and managing the Product. Pictures, charts, images and all other information hereinafter are for description and explanation only.
- The information contained in the Document is subject to change, without notice, due to firmware updates or other reasons. Please find the latest version of the Document at the Hikvision website (<https://www.hikvision.com>). Unless otherwise agreed, Hangzhou Hikvision Digital Technology Co., Ltd. or its affiliates (hereinafter referred to as "Hikvision") makes no warranties, express or implied.
- Please use the Document with the guidance and assistance of professionals trained in supporting the Product.

About this Product

This product can only enjoy the after-sales service support in the country or region where the purchase is made.

Acknowledgment of Intellectual Property Rights

- Hikvision owns the copyrights and/or patents related to the technology embodied in the Products described in this Document, which may include licenses obtained from third parties.
- Any part of the Document, including text, pictures, graphics, etc., belongs to Hikvision. No part of this Document may be excerpted, copied, translated, or modified in whole or in part by any means without written permission.
- **HIKVISION** and other Hikvision's trademarks and logos are the properties of Hikvision in various jurisdictions.
- Other trademarks and logos mentioned are the properties of their respective owners.

LEGAL DISCLAIMER

- TO THE MAXIMUM EXTENT PERMITTED BY APPLICABLE LAW, THIS DOCUMENT AND THE PRODUCT DESCRIBED, WITH ITS HARDWARE, SOFTWARE AND FIRMWARE, ARE PROVIDED "AS IS" AND "WITH ALL FAULTS AND ERRORS". HIKVISION MAKES NO WARRANTIES, EXPRESS OR IMPLIED, INCLUDING WITHOUT LIMITATION, MERCHANTABILITY, SATISFACTORY QUALITY, OR FITNESS FOR A PARTICULAR PURPOSE. THE USE OF THE PRODUCT BY YOU IS AT YOUR OWN RISK. IN NO EVENT WILL HIKVISION BE LIABLE TO YOU FOR ANY SPECIAL, CONSEQUENTIAL, INCIDENTAL, OR INDIRECT DAMAGES, INCLUDING, AMONG OTHERS, DAMAGES FOR LOSS OF BUSINESS PROFITS, BUSINESS INTERRUPTION, OR LOSS OF DATA, CORRUPTION OF SYSTEMS, OR LOSS OF DOCUMENTATION, WHETHER BASED ON BREACH OF CONTRACT, TORT (INCLUDING NEGLIGENCE), PRODUCT LIABILITY, OR OTHERWISE, IN CONNECTION WITH THE USE OF THE




PRODUCT, EVEN IF HIKVISION HAS BEEN ADVISED OF THE POSSIBILITY OF SUCH DAMAGES OR LOSS.

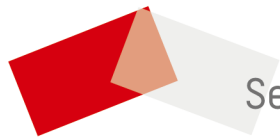
- YOU ACKNOWLEDGE THAT THE NATURE OF THE INTERNET PROVIDES FOR INHERENT SECURITY RISKS, AND HIKVISION SHALL NOT TAKE ANY RESPONSIBILITIES FOR ABNORMAL OPERATION, PRIVACY LEAKAGE OR OTHER DAMAGES RESULTING FROM CYBER-ATTACK, HACKER ATTACK, VIRUS INFECTION, OR OTHER INTERNET SECURITY RISKS; HOWEVER, HIKVISION WILL PROVIDE TIMELY TECHNICAL SUPPORT IF REQUIRED.
- YOU AGREE TO USE THIS PRODUCT IN COMPLIANCE WITH ALL APPLICABLE LAWS, AND YOU ARE SOLELY RESPONSIBLE FOR ENSURING THAT YOUR USE CONFORMS TO THE APPLICABLE LAW. ESPECIALLY, YOU ARE RESPONSIBLE, FOR USING THIS PRODUCT IN A MANNER THAT DOES NOT INFRINGE ON THE RIGHTS OF THIRD PARTIES, INCLUDING WITHOUT LIMITATION, RIGHTS OF PUBLICITY, INTELLECTUAL PROPERTY RIGHTS, OR DATA PROTECTION AND OTHER PRIVACY RIGHTS. YOU SHALL NOT USE THIS PRODUCT FOR ANY PROHIBITED END-USES, INCLUDING THE DEVELOPMENT OR PRODUCTION OF WEAPONS OF MASS DESTRUCTION, THE DEVELOPMENT OR PRODUCTION OF CHEMICAL OR BIOLOGICAL WEAPONS, ANY ACTIVITIES IN THE CONTEXT RELATED TO ANY NUCLEAR EXPLOSIVE OR UNSAFE NUCLEAR FUEL-CYCLE, OR IN SUPPORT OF HUMAN RIGHTS ABUSES.
- IN THE EVENT OF ANY CONFLICTS BETWEEN THIS DOCUMENT AND THE APPLICABLE LAW, THE LATTER PREVAILS.

© Hangzhou Hikvision Digital Technology Co., Ltd. All rights reserved.

Appendix B. Symbol Conventions

The symbols that may be found in this document are defined as follows.

Symbol	Description
 Danger	Indicates a hazardous situation which, if not avoided, will or could result in death or serious injury.
 Caution	Indicates a potentially hazardous situation which, if not avoided, could result in equipment damage, data loss, performance degradation, or unexpected results.
 Note	Provides additional information to emphasize or supplement important points of the main text.



See Far, Go Further